

Geologic Hazards of the Carolinas

by

Bob Conder K4RLC

AEC Wake ARES

NC SERT

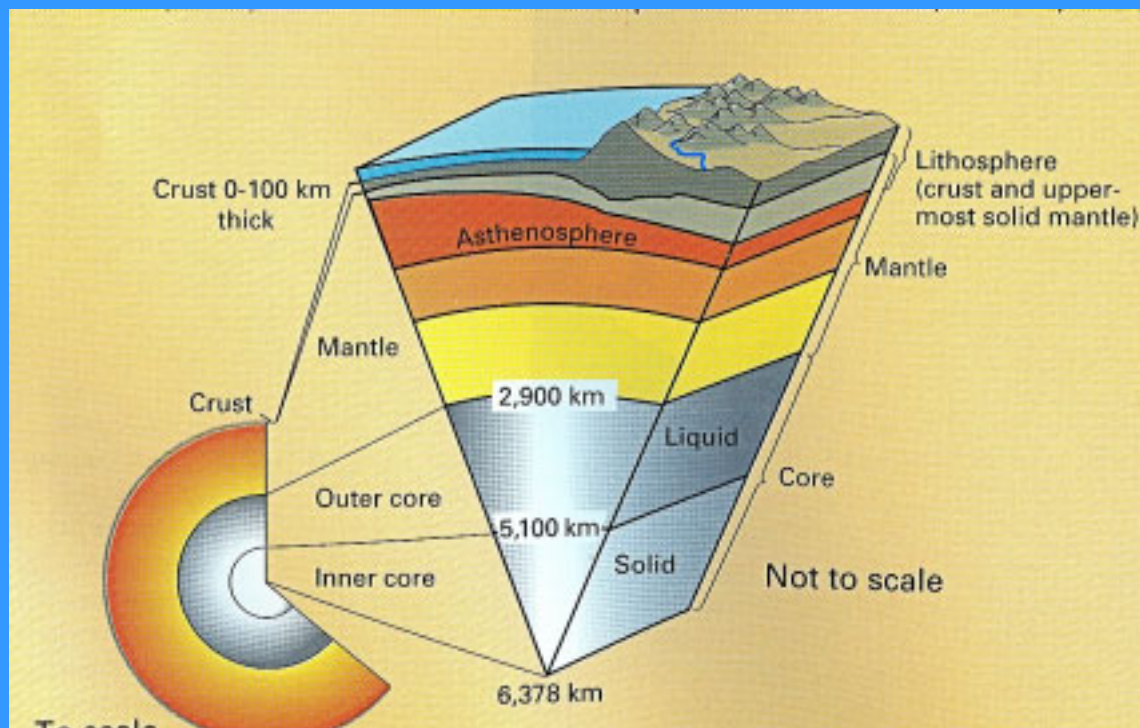
Earth is an Oblate Spheroid

NASA



Earth's Layers

USGS



Major Tectonic Plates

Courtesy USGS

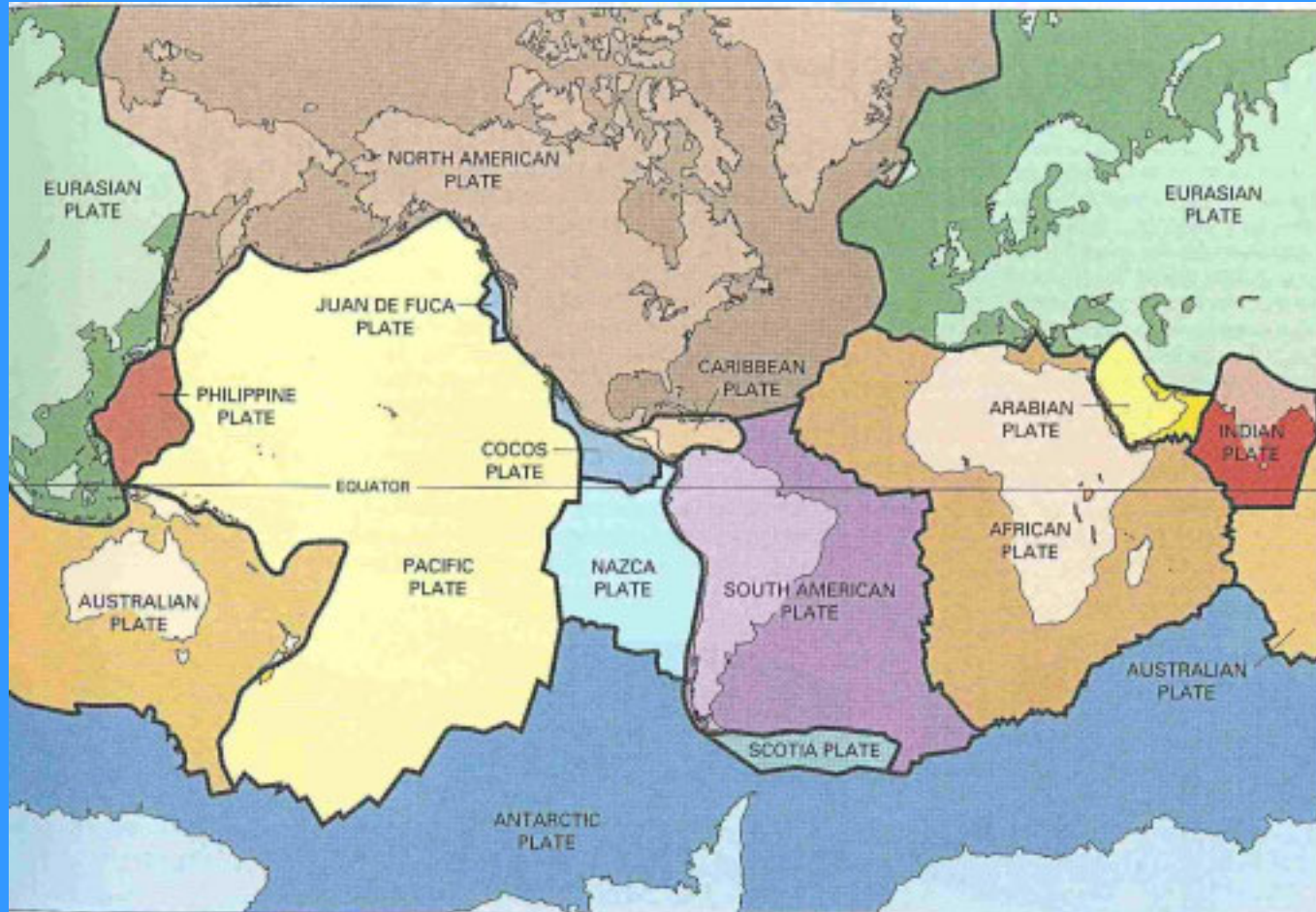
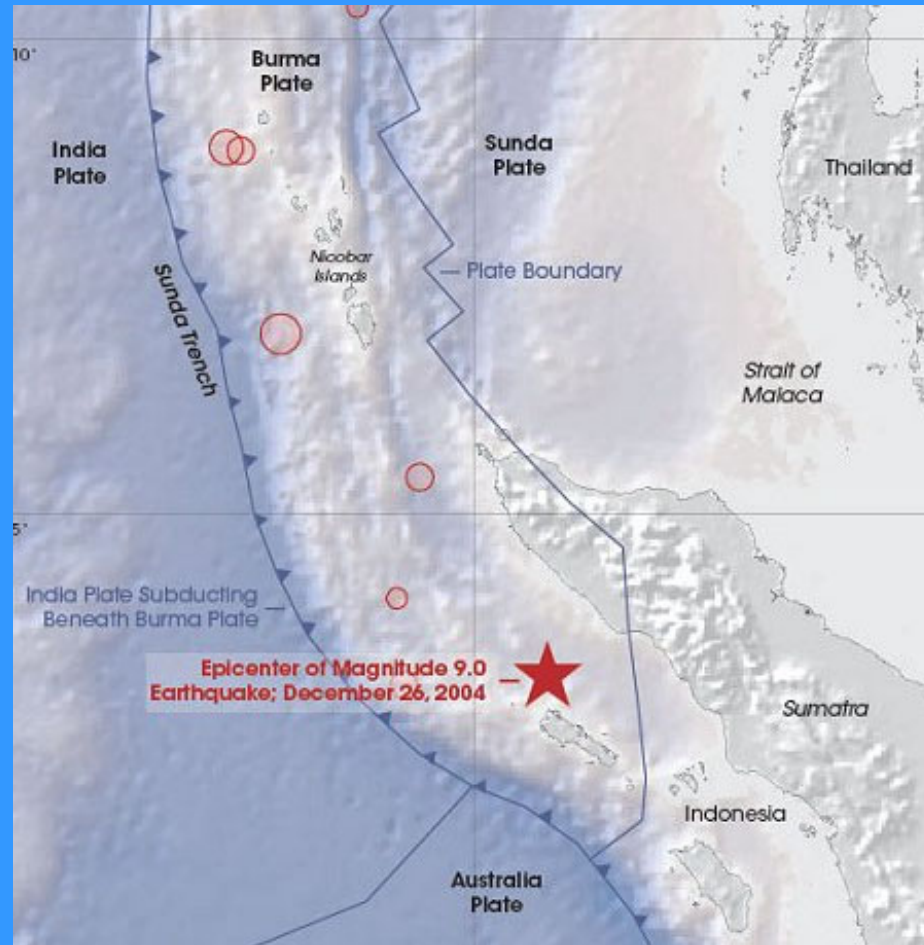
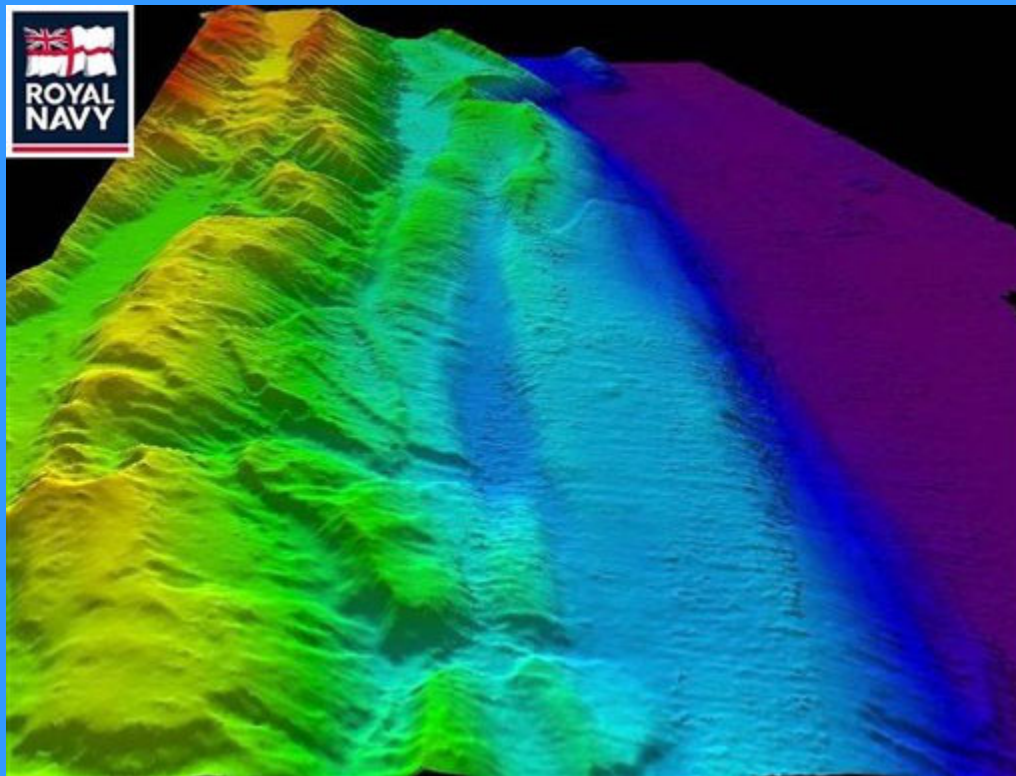


Plate Action=Tsunami

NASA



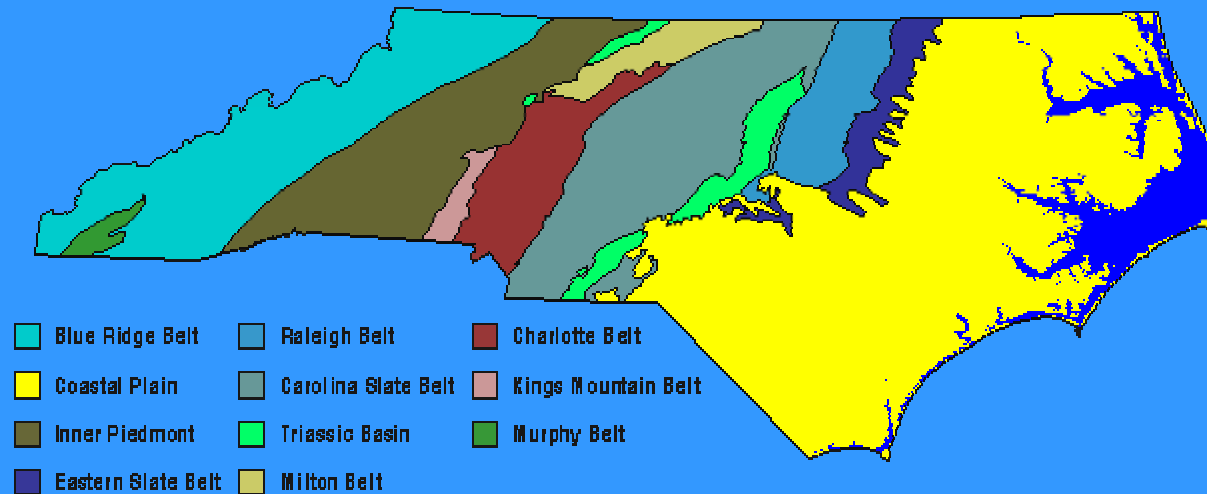
Sonar of Tsunami



North Carolina Geology

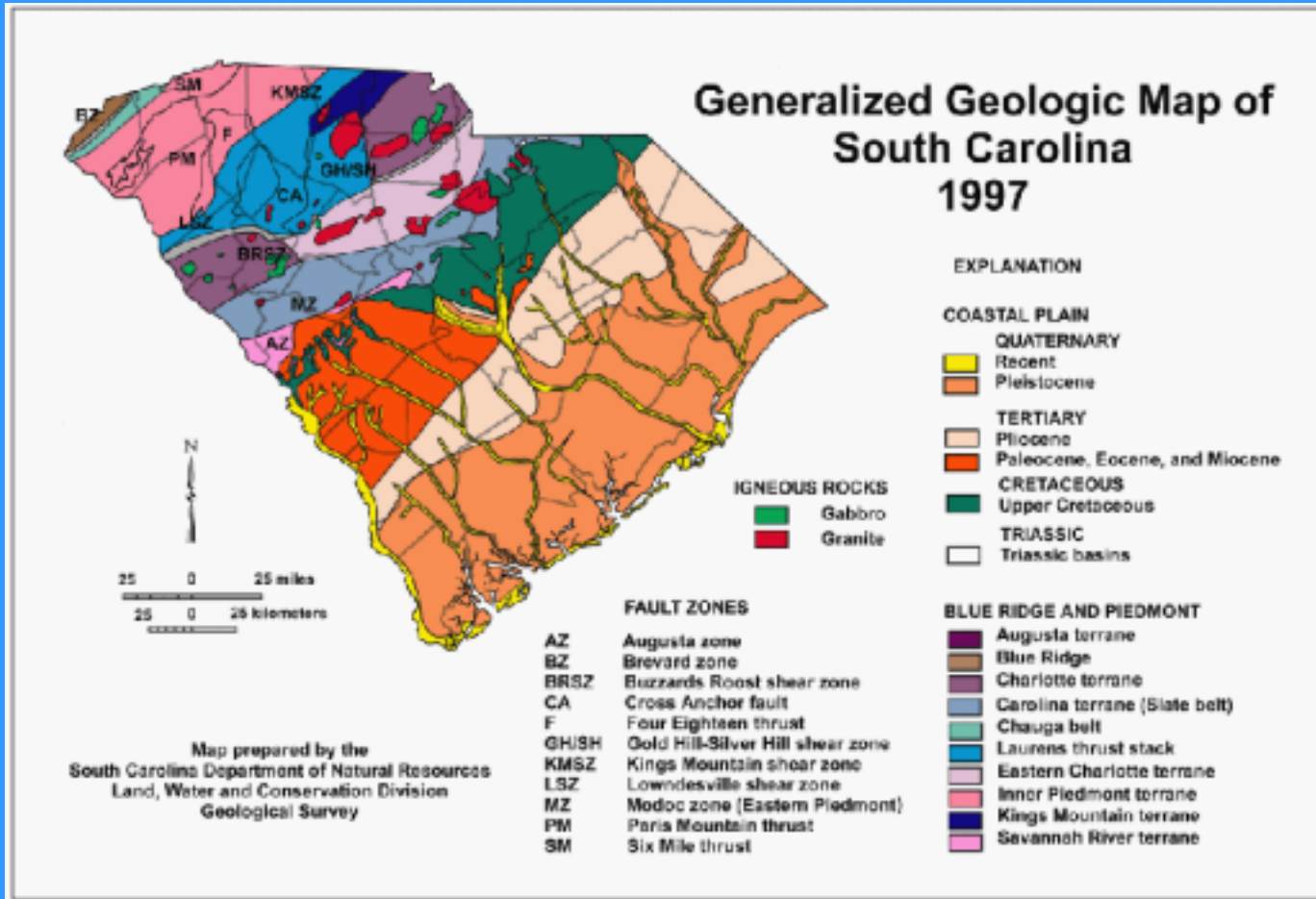
Courtesy NCGS

North Carolina Geology



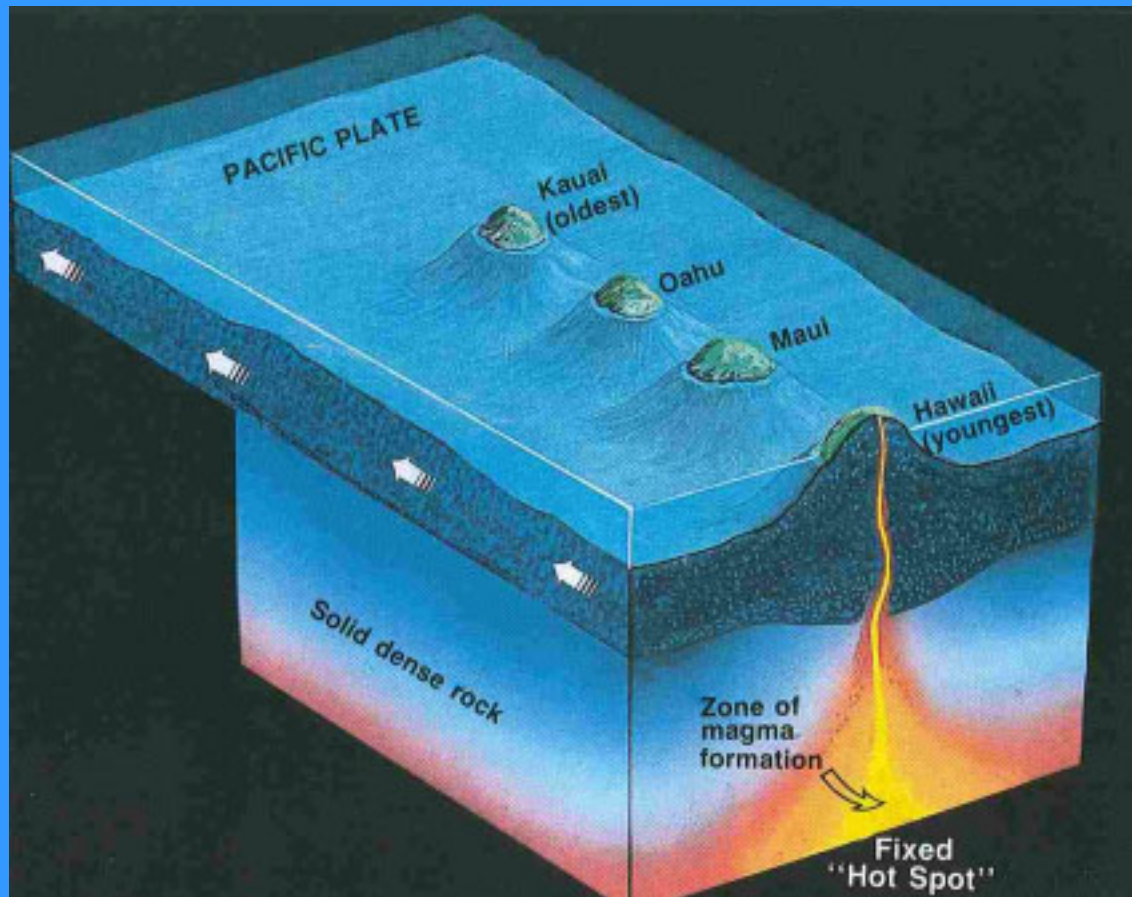
South Carolina Geology

SC DNR



Volcano Genesis

USGS

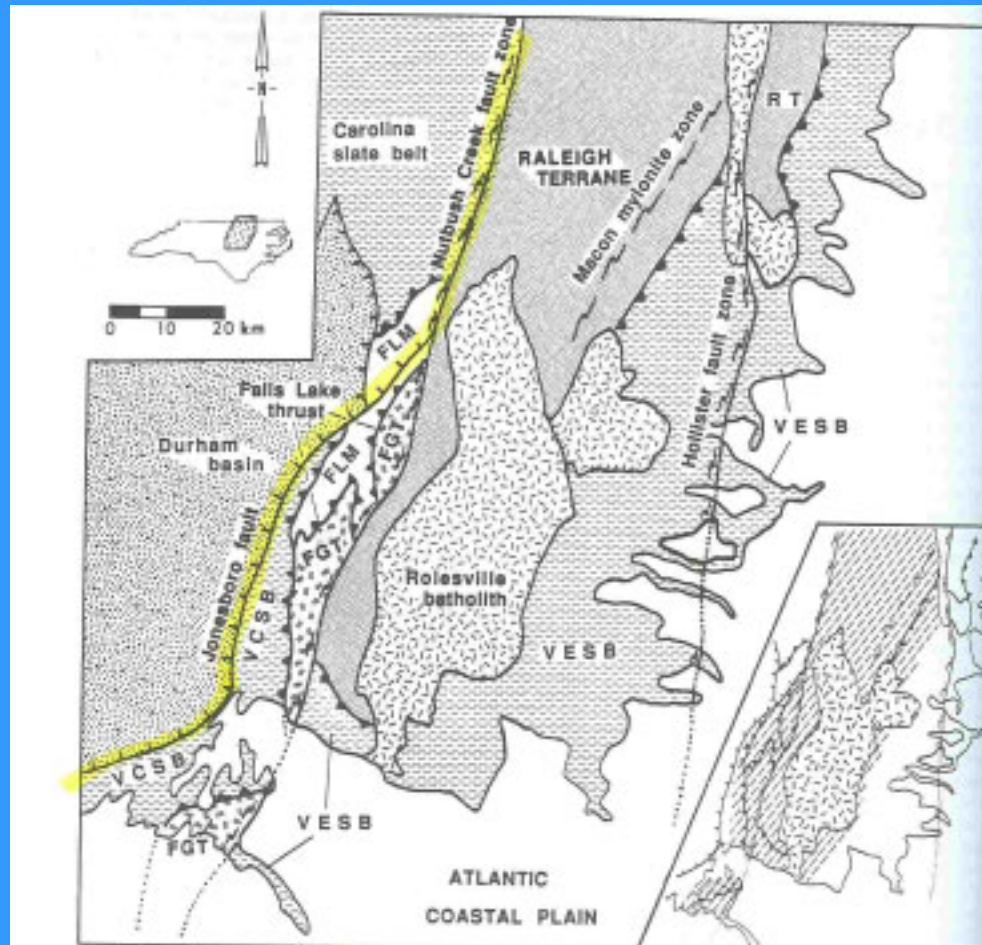


Volcano



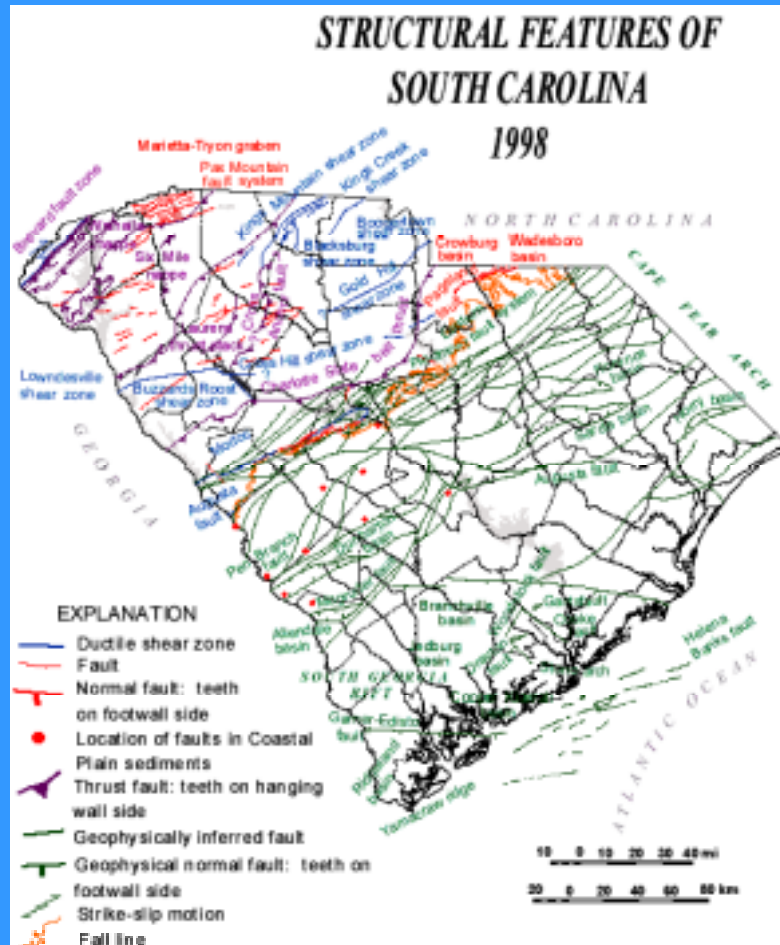
North Carolina Faults

Horton & Zullo – Geology of Carolinas



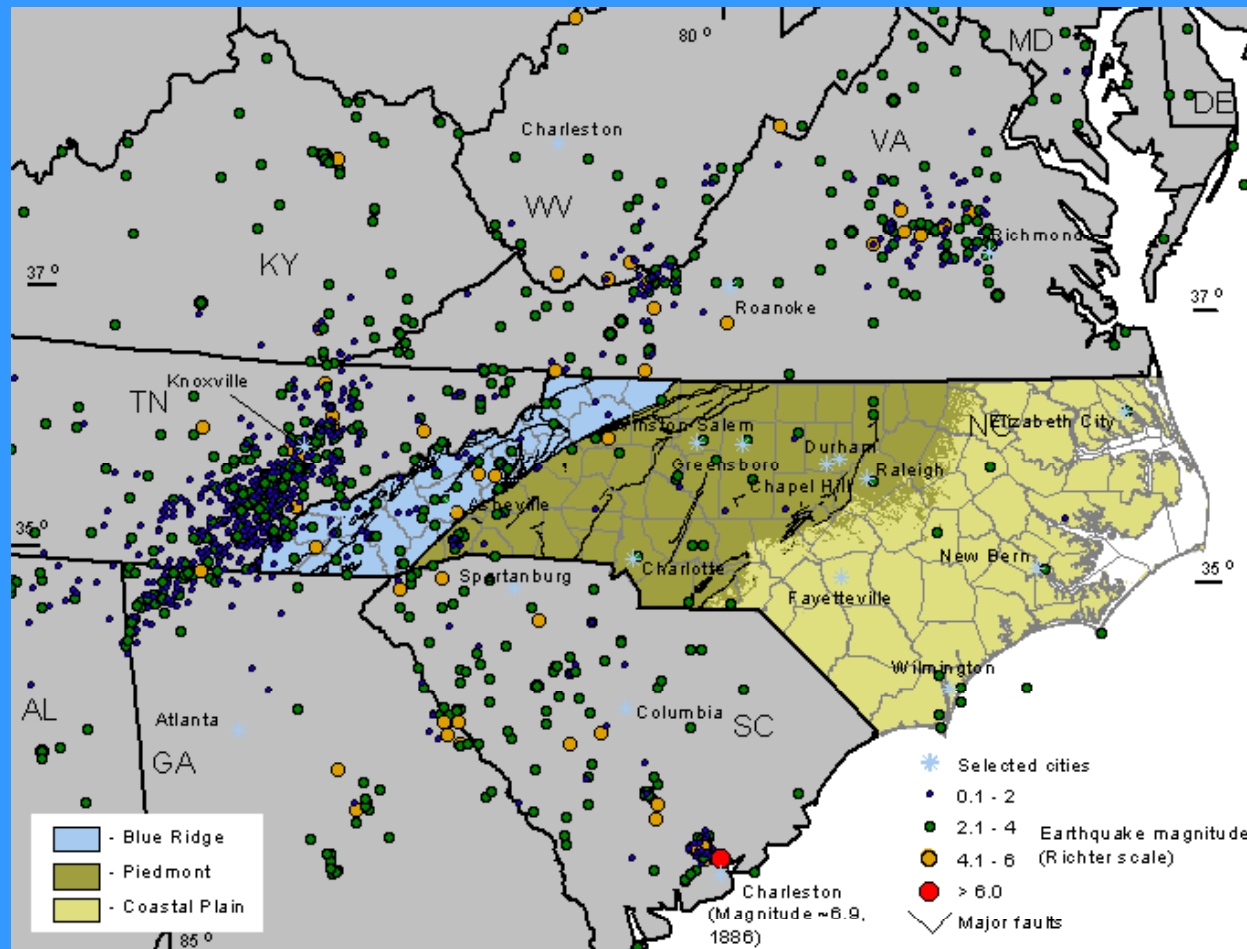
South Carolina

SCDNR



Carolina Earthquakes 1698-1997

Courtesy NCGS



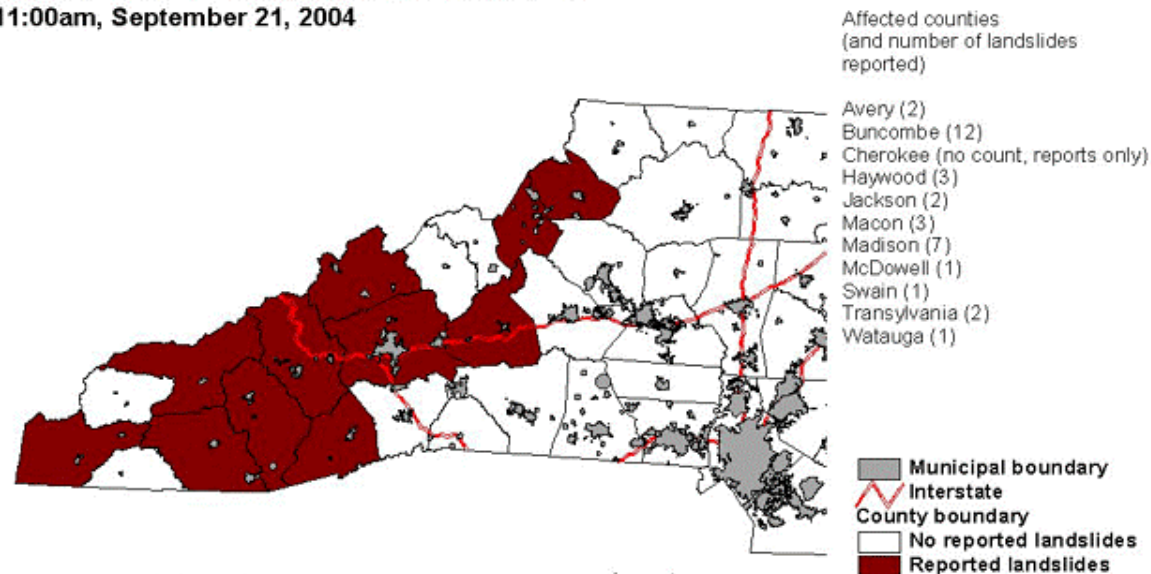
Landslides – NC

NCGS



Landslides from Ivan

Landslides related to Hurricane Ivan -
Counties in which landslides are reported as of
11:00am, September 21, 2004



North Carolina Geological Survey
Voice: 919.733.2423
Internet: <http://www.geology.enr.state.nc.us>



70 0 70 140 Miles



House destroyed Debris Field

NCGS



Tsunami Outer Banks



MMS

Interactive Database: Vibracores from Offshore
Northern Dare County, North Carolina

North Carolina Geological Survey
Open-File Report 2001-02

Charles W. Hoffman
Robert W. Brooks

